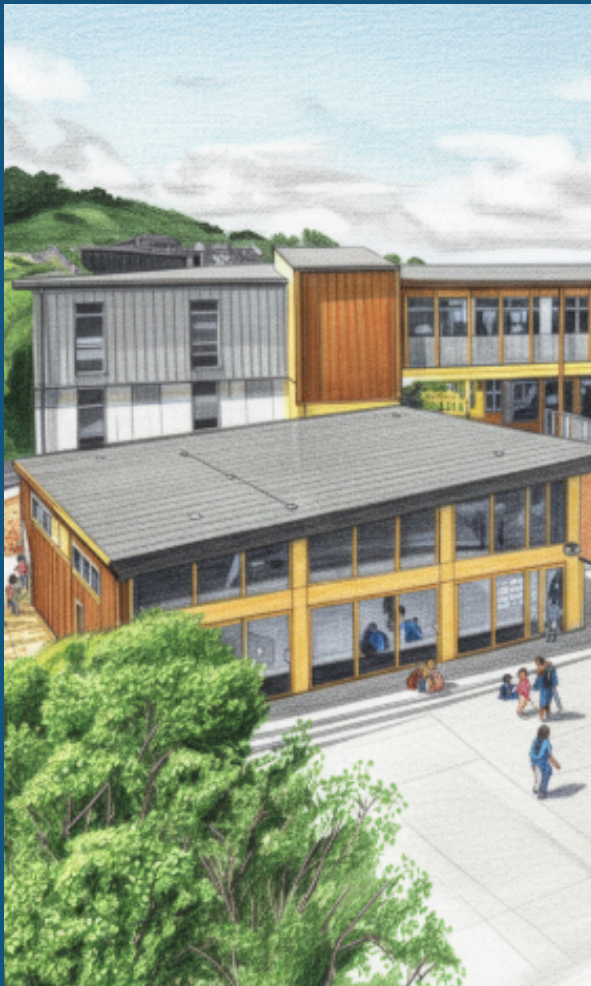


# Northland School

## Annual Plan 2026



Tū mai Te Ahūmairangi, tū mai hoki tātou  
As Te Ahūmairangi stands, we also reach for great heights

## Northland School Strategic Plan 2025 - 2028

Vision Statement **“A community of learners living our values and confident to reach great heights.”**

Pou	Goals	Initiatives	Success statement
<b>Ako</b> Teaching and Learning	<b>Maximise and empower learners</b>	<ul style="list-style-type: none"> <li>Implement learning design that promotes purpose, engagement, and a connection to the world.</li> <li>Create a framework that develops high performing teachers.</li> <li>Develop a model for leading curriculum change.</li> </ul>	High-performing teachers enhance learning and engagement outcomes for tamariki across the curriculum through evidence-based decision-making.
<b>Whanaungatanga</b> Relationships	<b>Foster connections to strengthen community</b>	<ul style="list-style-type: none"> <li>Strengthen partnership and connections with mana whenua, Te Ātīawa, whānau and tamariki.</li> <li>Continually build highly effective communication across all stakeholders.</li> <li>Explore environmental projects that enhance school assets.</li> </ul>	Reflecting mana whenua, we acknowledge and welcome the identity of tamariki and all our families, while fostering a collaborative community effort to nurture and positively contribute to our vision.
<b>Oranga</b> Wellbeing	<b>Build a resilient school culture</b>	<ul style="list-style-type: none"> <li>Strengthen positive behaviour for learning.</li> <li>Enhance leadership opportunities.</li> <li>Prioritise a safe and bullying-free school environment.</li> </ul>	The school thrives through change with robust and agile leadership, while school life fosters a safe, inclusive, and caring climate.

Our Values  
**C · H · A · M · P**

We are a community of kind, curious, confident, active, and creative learners who reach for great heights.  
Northland School a Kura in Te Whanganui a tara guided by mana whenua, Te Ātīawa.

Confident Whakamanawa	Hikohiko Active	Auaatanga Creative	Manaaki Kind	Pātaitai Curious
--------------------------	--------------------	-----------------------	-----------------	---------------------

 <b>Northland School</b> Te Kura o Orangi Kaupapa  Tū mai Te Ahūmairangi, tū mai hoki tātou. As Te Ahūmairangi stands, we also reach for great heights.	kind WE ARE KIND LEARNERS WHO find others with talent and are confident to reach for great heights and opportunities that will make our lives better.	CURIOUS WE ARE CURIOUS LEARNERS WHO think critically and are confident to reach for great heights and opportunities that will make our lives better.	CONFIDENT WE ARE CONFIDENT LEARNERS WHO are confident to reach for great heights and opportunities that will make our lives better.	ACTIVE WE ARE ACTIVE LEARNERS WHO are confident to reach for great heights and opportunities that will make our lives better.	Creative WE ARE CREATIVE LEARNERS WHO are confident to reach for great heights and opportunities that will make our lives better.
	Manaaki WE ARE MANAAKI LEARNERS WHO are confident to reach for great heights and opportunities that will make our lives better.	PĀTAITAI WE ARE PĀTAITAI LEARNERS WHO are confident to reach for great heights and opportunities that will make our lives better.	WHAKAMANAWA WE ARE WHAKAMANAWA LEARNERS WHO are confident to reach for great heights and opportunities that will make our lives better.	HIKOHIKO WE ARE HIKOHIKO LEARNERS WHO are confident to reach for great heights and opportunities that will make our lives better.	AUAATANGA WE ARE AUAATANGA LEARNERS WHO are confident to reach for great heights and opportunities that will make our lives better.

# Ako

## Teaching and Learning

### Learning

- Deliver explicit, systemic teaching in English and Maths.
- Accelerate progress for learners not yet at expected levels.
- Engage students in cross-curricular inquiry learning (Mahi Rangahau).

### Assessment

- Use regular assessment data to drive teaching and planning.
- Analyse achievement data to determine the next steps for all learners.
- Create and track tiered support plans for priority learners.

### Teaching & Reporting

- Align teaching and planning with the changing curriculum.
- Provide regular learning updates to whānau via HERO and formal reports.



# Whanaungatanga

## Relationships

### Community & Culture

- Encourage whānau to share their cultural expertise.
- Consult whānau when developing programmes for their tamariki.
- Implement the te reo Māori learning sequence.
- Foster a strong sense of belonging for all families.

### Connection

- Sustain strong, effective communication with all families.
- Grow engagement with the PTA, early childhood centres, and local community.

### Environment

- Develop and maintain inviting outdoor spaces for ākonga and the community.



# Oranga

## Wellbeing

### Behaviour & Relationships

- Guide students to repair relationships.
- Create scripts for consistent restorative conversations.
- Keep parents fully informed on actions.

### Systems & Leadership

- Clarify and update school operations.
- Streamline leadership roles for the future.

### Communication & Wellbeing

- Communicate openly about bullying.
- Work in partnership with whānau.
- Actively track and report attendance.



*Tū mai Te Ahūmairangi, tū mai hoki tātou*  
As Te Ahūmairangi stands, we also reach  
for great heights